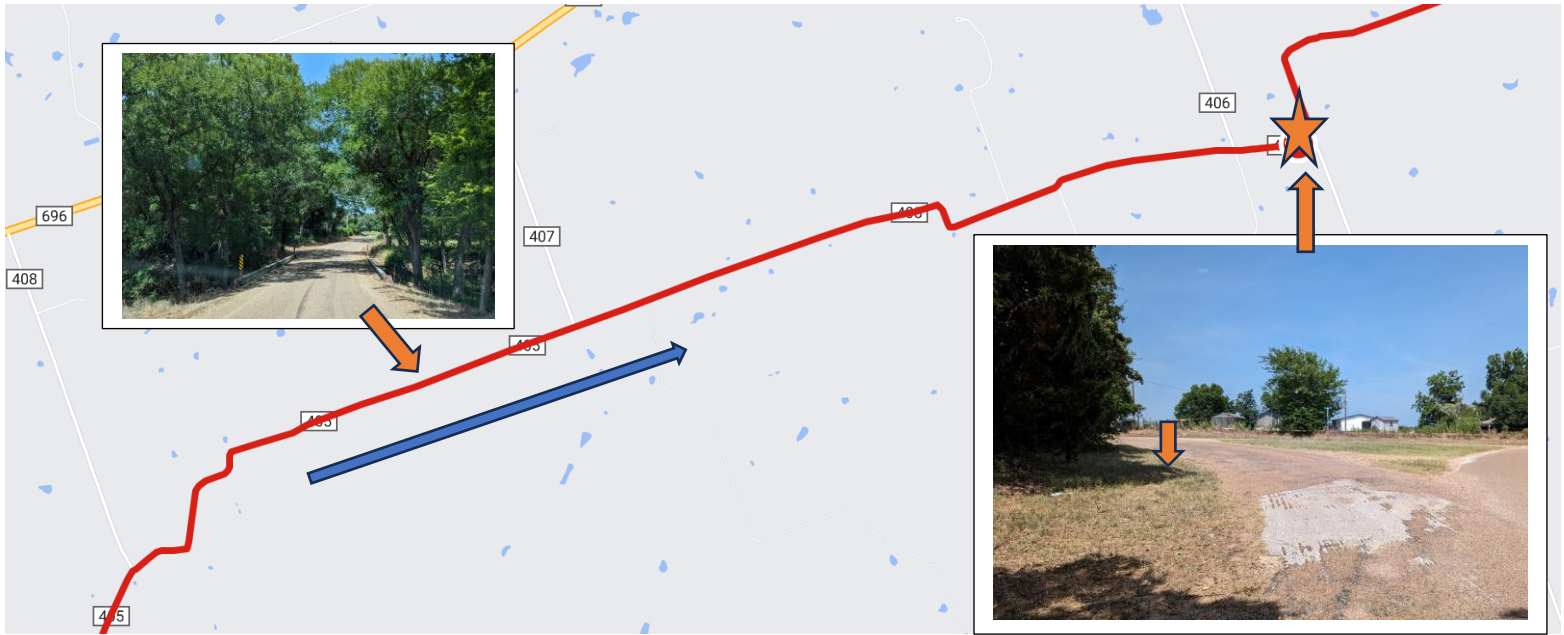




CAMPUS TO CAMPUS AUSTIN TO AGGIELAND

THE RIVALRY CONTINUES!!!

LEG 21 *Unbelievable Run! Peaceful Country Road!*



DIRECTIONS:

Continue running on HWY 405.

After 2.6 miles the road will take quick jaunt to the RIGHT and then LEFT.

Continue running another 1.1 miles until you reach the exchange zone.

3.7 MILES

EXCHANGE ZONE 21: Intersection of HWY 405 and HWY 401. The exchange will be on the LEFT with plenty of parking in the middle of the "Y" or along the shoulders.

Elevation

Start **439 ft** Max **483 ft** Gain **125 ft**

Click and drag over a section to see approximated elevation data. Exact elevation data is shown when the route is saved.

