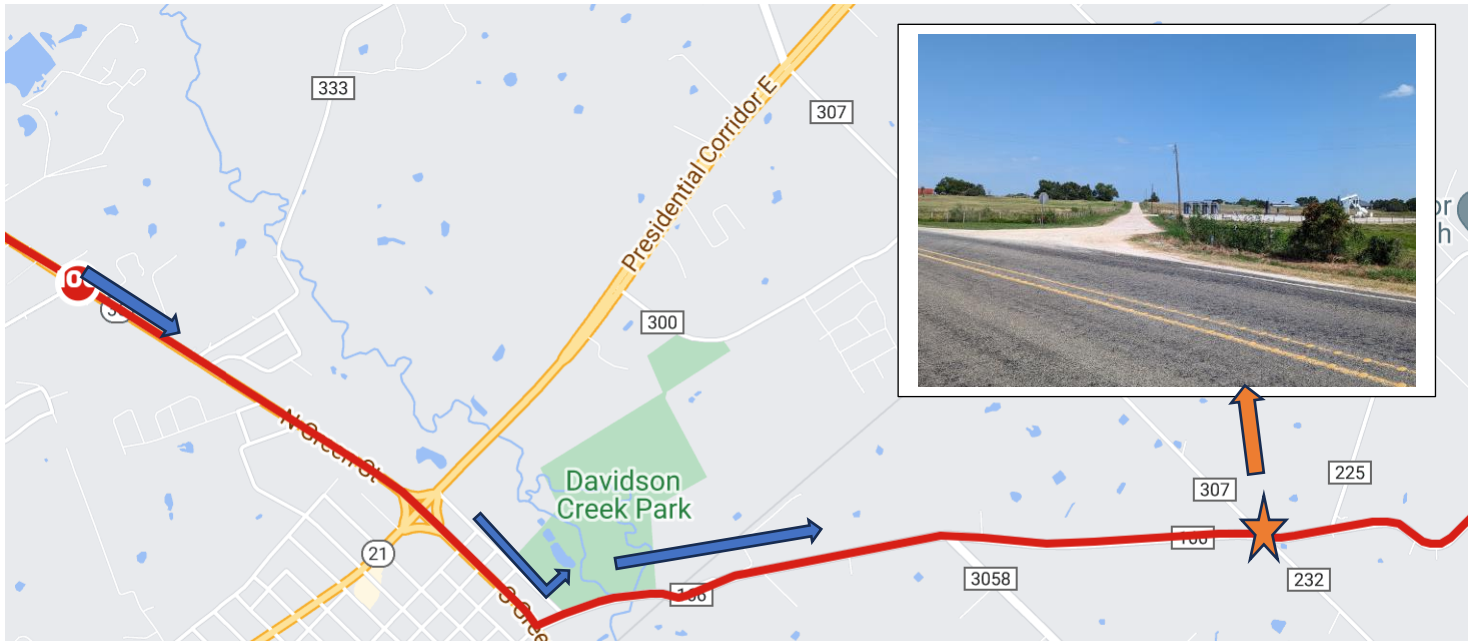




CAMPUS TO CAMPUS AUSTIN TO AGGIELAND

THE RIVALRY CONTINUES!!!

LEG 27 – Caldwell Part 2



DIRECTIONS:

When leaving the exchange zone – continue running on HWY 36 (N GREEN ST).

You will continue to run across HWY 21 (USE CAUTION- WAIT FOR THE LIGHT) and HWY 36 will turn into S GREEN St.

Continue on S GREEN ST. for .9 miles and take a LEFT on E BUFFALO ST. (HWY 166)

****while running down E BUFFALO ST. – please use caution while going under a very narrow train tressel****

Run down E BUFFALO ST (HWY 166) for another 1.8 miles until you reach the exchange zone.

EXCHANGE ZONE 27: Intersection of E BUFFALO ST (HWY 166) and HWY 232 - it is working derrick. The exchange will be on the LEFT but parking of cars will be on 232 towards the oil derricks, along the gravel road.

2.7 MILES

Elevation

Click and drag over a section to see approximated elevation data. Exact elevation data is shown when the route is saved.

Start	Max	Gain
389 ft	390 ft	76 ft

