

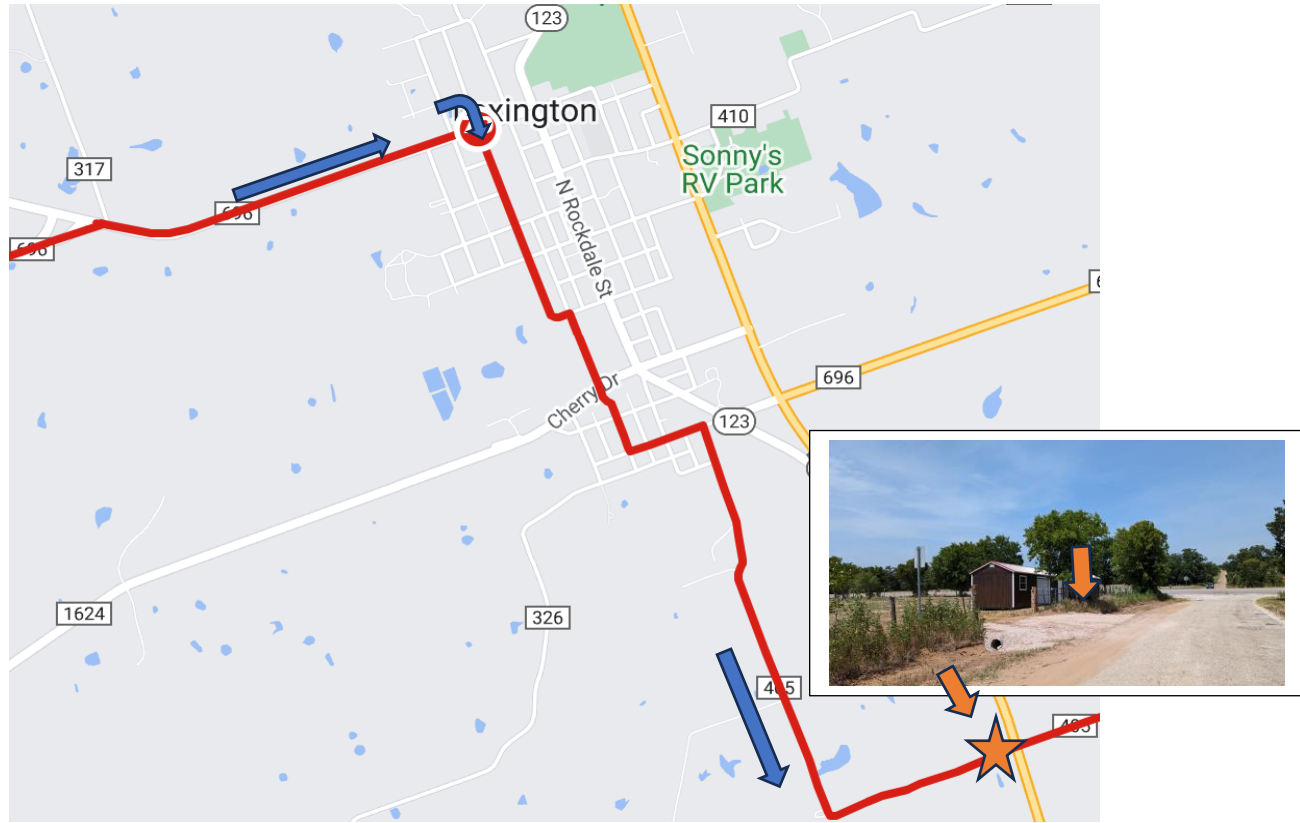


CAMPUS TO CAMPUS AUSTIN TO AGGIELAND

THE RIVALRY CONTINUES!!!

LEG 19

The LEXINGTON LEG!!



DIRECTIONS:

When leaving the exchange zone - continue running East on HWY 696 (Seventh St.) for .9 miles

Take a RIGHT on Gidding St., continue running down Gidding St (cross 4th and 3rd) for .5 miles.

Take a quick jaunt LEFT for .1 miles and then an immediate RIGHT on McDade Rd. After crossing CHERRY DR / FM1624., the road will change to AVE E., continue on for .3 miles.

At HESTER ST., take a LEFT (you'll see a BROWN TRAILER #621), go .4 miles then take a RIGHT on AVE A. /S. STOCKDALE.

AVE A / S. STOCKDALE will change to Hwy 405.

The road will automatically turn to the LEFT - then continue to run to the exchange right before HWY 77.

3.5 MILES

EXCHANGE ZONE 19: Intersection of HWY 77 and HWY 405 – before the hwy with more space. Just park parallel along the road.

Elevation

Start 459 ft Max 465 ft Gain 122 ft

Click and drag over a section to see approximated elevation data. Exact elevation data is shown when the route is saved.

