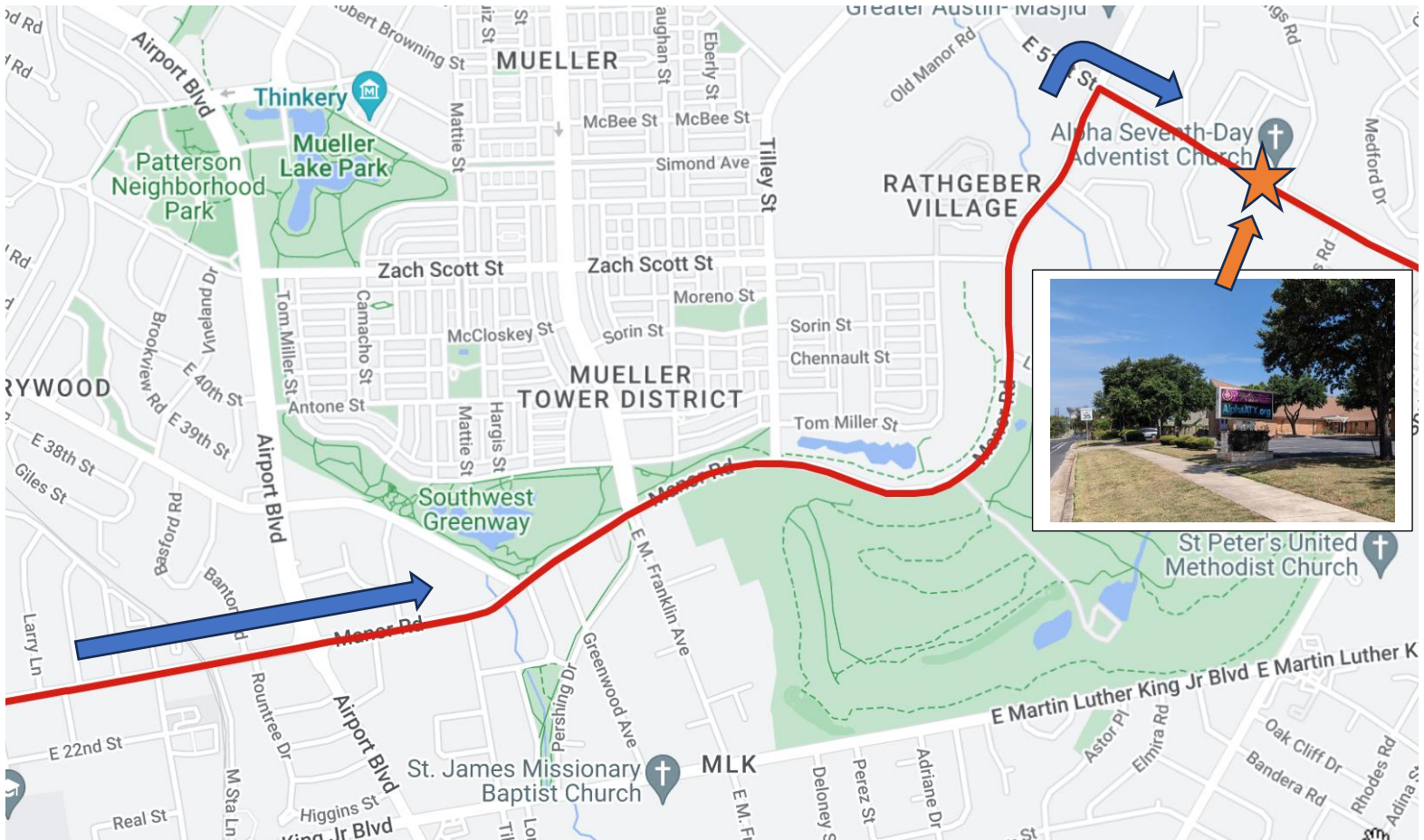




CAMPUS TO CAMPUS AUSTIN TO AGGIELAND

THE RIVALRY CONTINUES!!!

LEG 2 "All Sidewalks and Bike Lanes thru the ATX"



DIRECTIONS:

Leave from the HAYMAKER BREWERY and continue running EAST on MANOR RD.

Stay on Manor Rd. for 2.1 Miles – **USE SIDEWALKS /BIKE LANE ON THE LEFT HAND SIDE**

AT AIRPORT ROAD – WAIT FOR THE LIGHT TO CROSS THE STREET.

Turn RIGHT on E. 51st Street.

Run on E. 51st Street for .3 Miles to Alpha Seventh Day Adventist Church on the left.

EXCHANGE ZONE 2: ALPHA SEVENTH DAY ADVENTIST CHURCH ON THE LEFT. PARK IN THE CHURCH PARKING LOT

2.4 MILES

Elevation

Start	Max	Gain
591 ft	602 ft	139 ft

Click and drag over a section to see approximated elevation data. Exact elevation data is shown when the route is saved.

